

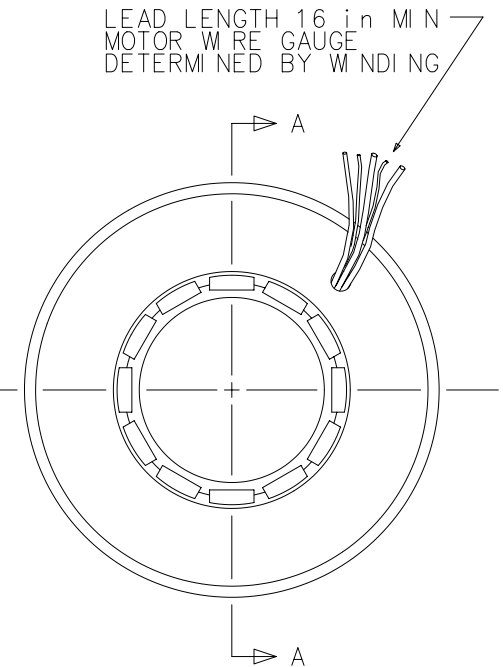
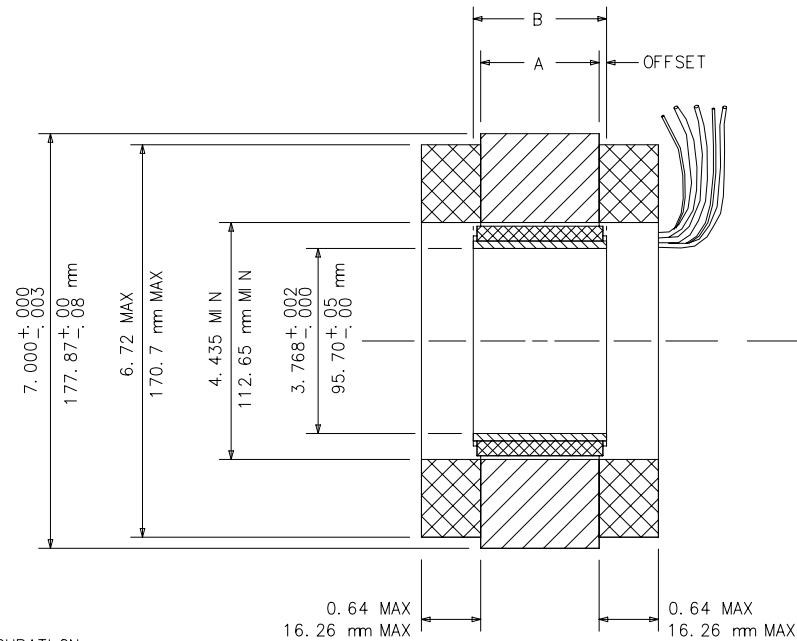
MODEL NUMBER	STACK LENGTH DI M. "A"		ROTOR LENGTH DI M. "B"	
	in ±.015	mm ±0.64	in ±.005	mm ±0.13
B18-13	0.500	12.70	0.505	12.83
B18-25	1.000	25.40	1.010	25.65
B18-38	1.500	38.10	1.515	38.48
B18-51	2.000	50.80	2.020	51.31
B18-64	2.500	63.50	2.525	64.14
B18-76	3.000	76.20	3.030	76.96

OFFSET SHOULD EQUAL (B-A)/2 ±0.025 in
ROTOR SHOULD BE MOUNTED CONCENTRIC TO WITHIN 0.004 WITH RESPECT TO STATOR OD

MOTOR DIMENSIONS SHOWN APPLY ONLY IN A MACHINING OR TEST FIXTURE AND NOT IN THE FREE OR UNRESTRAINED STATE

DETAILS OF MOTOR SHOWN ARE GENERIC. ACTUAL MOTOR MAY DIFFER IN APPEARANCE

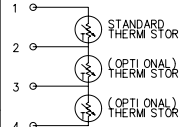
REVISIONS			
REV	DESCRIPTION	DATE	APPROVED
A	REDRAWN	4-23-91	NH
B	ECR #150 THERMISTOR NOTE	9-17-91	EEB
C	REQ #129 CORRECTED mm TOLERANCE	12-22-92	NH
D	CORRECTED CHART AND NOTES	6-23-95	EEB



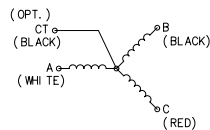
SECTION AA

LEAD SIDE

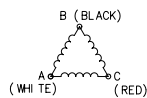
ONE THERMISTOR IS STANDARD



WYE CONFIGURATION



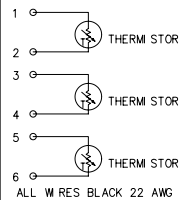
DELTA CONFIGURATION



MOTOR ROTATION WILL BE IN THE CLOCKWISE DIRECTION AS VIEWED FROM THE LEAD SIDE WHEN ENERGIZED IN THE SEQUENCE WHITE-BLACK-RED

CONSULT FACTORY FOR SIX-LEAD CONFIGURATION

OPTIONAL 3 THERMISTOR CONFIG



ALL WIRES BLACK 22 AWG

UNLESS OTHERWISE SPECIFIED DIMENSIONS ARE IN INCHES. TOLERANCES ARE:

FRACTIONS .XX = ±.01
r1/64 .XXX = ±.005

DECIMALS .XX = ±.01
.XXX = ±.005

ANGLES r1°

MATERIAL

FINISH

DO NOT SCALE DRAWING

MOTION CONTROL SYSTEMS, INC.
Dublin, Virginia 24084

FRAMELESS MOTOR PHYSICAL SPECIFICATIONS
B18-XXX-18 VARNISHED WINDINGS
(3.768 ID)

SIZE A SCALE NONE DWG NO. W2006064 REV. D

CHKD DATE: NH 4-23-91 DWG DATE: TD 4-23-91 SHEET 1 OF 1