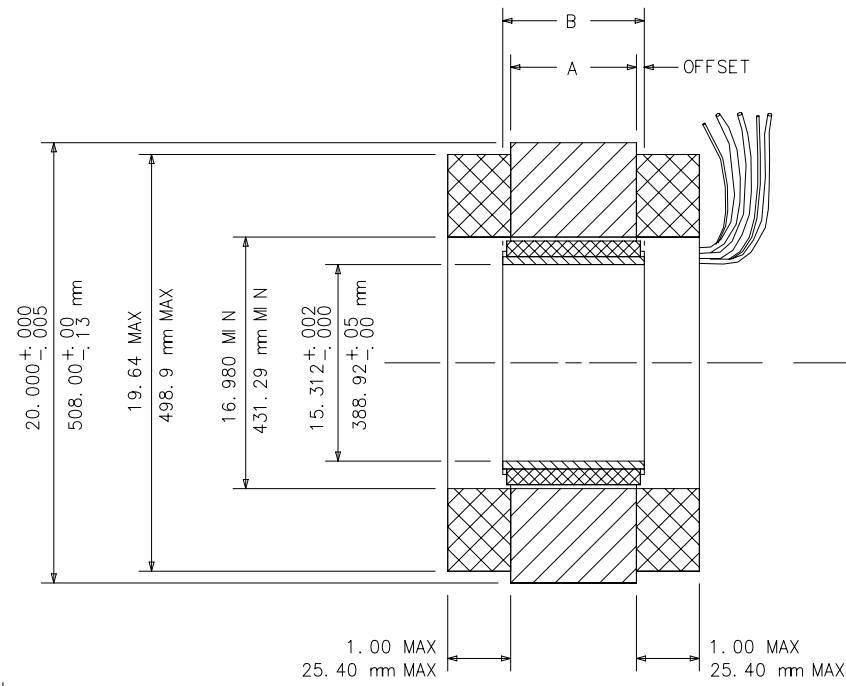


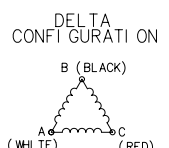
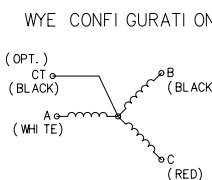
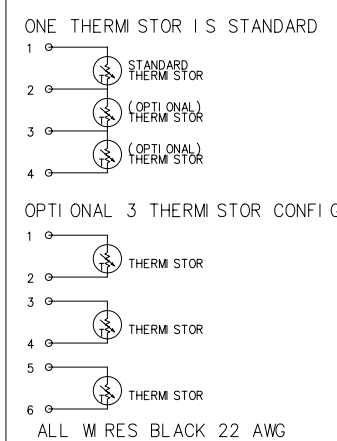
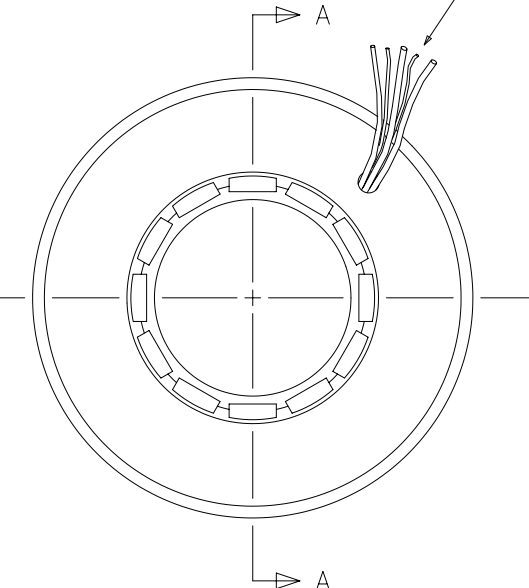
| MODEL NUMBER | STACK LENGTH "A" | | ROTOR LENGTH "B" | |
|--------------|--------------------------|------------------------|--------------------------|------------------------|
| | in ± 0.025 -0.010 | mm ± 0.64 -0.25 | in ± 0.005 -0.000 | mm ± 0.13 -0.00 |
| B51-13 | 0.500 | 12.70 | 0.505 | 12.83 |
| B51-25 | 1.000 | 25.40 | 1.010 | 25.65 |
| B51-38 | 1.500 | 38.10 | 1.515 | 38.48 |
| B51-51 | 2.000 | 50.80 | 2.020 | 51.31 |
| B51-64 | 2.500 | 63.50 | 2.525 | 64.14 |
| B51-76 | 3.000 | 76.20 | 3.030 | 76.96 |
| B51-89 | 3.500 | 88.90 | 3.535 | 89.79 |
| B51-102 | 4.000 | 101.60 | 4.040 | 102.62 |
| B51-114 | 4.500 | 114.30 | 4.545 | 115.44 |
| B51-127 | 5.000 | 127.00 | 5.050 | 128.27 |
| B51-140 | 5.500 | 139.70 | 5.555 | 141.10 |
| B51-152 | 6.000 | 152.40 | 6.060 | 153.92 |
| B51-165 | 6.500 | 165.10 | 6.565 | 166.75 |
| B51-178 | 7.000 | 177.80 | 7.070 | 179.58 |
| B51-191 | 7.500 | 190.50 | 7.575 | 192.41 |
| B51-203 | 8.000 | 203.20 | 8.080 | 205.23 |
| B51-216 | 8.500 | 215.90 | 8.585 | 218.06 |
| B51-229 | 9.000 | 228.60 | 9.090 | 230.89 |
| B51-241 | 9.500 | 241.30 | 9.595 | 243.71 |
| B51-254 | 10.000 | 254.00 | 10.100 | 256.54 |
| B51-267 | 10.500 | 266.70 | 10.605 | 269.37 |
| B51-279 | 11.000 | 279.40 | 11.110 | 282.19 |
| B51-292 | 11.500 | 292.10 | 11.615 | 295.02 |
| B51-305 | 12.000 | 304.80 | 12.120 | 307.85 |

OFFSET SHOULD EQUAL (B-A)/2 ± 0.025 in
 ROTOR SHOULD BE MOUNTED CONCENTRIC TO WITHIN 0.004 WITH RESPECT TO STATOR OD
 MOTOR DIMENSIONS SHOWN APPLY ONLY IN A MACHINING OR TEST FIXTURE AND NOT IN THE FREE OR UNRESTRAINED STATE
 DETAILS OF MOTOR SHOWN ARE GENERIC ACTUAL MOTOR MAY DIFFER IN APPEARANCE

| REVISIONS | | | |
|-----------|-------------------------------|----------|----------|
| REV | DESCRIPTION | DATE | APPROVED |
| B | REDRAWN TO NEW STANDARD | 9-17-91 | NH |
| C | REQ #129 CORRECT mm TOLERANCE | 12-22-92 | NH |
| D | ADDED NEW CHART AND NOTES | | |



LEAD LENGTH 16 in MIN
 MOTOR WIRE GAUGE
 DETERMINED BY WINDING



MOTOR ROTATION WILL BE IN THE CLOCKWISE DIRECTION AS VIEWED FROM THE LEAD SIDE WHEN ENERGIZED IN THE SEQUENCE WHITE-BLACK-RED

CONSULT FACTORY FOR SIX-LEAD CONFIGURATION

SECTION AA

LEAD SIDE

UNLESS OTHERWISE SPECIFIED DIMENSIONS ARE IN INCHES. TOLERANCES ARE:

| | | |
|----------------------|--|---------------|
| FRACTIONS f1/64 | DECIMALS .XX = f.01 .XXX = f.005 | ANGLES f1° |
| MATERIAL | | |
| FINISH | | |
| DO NOT SCALE DRAWING | | |

| | | | |
|--|----------------------|--------------------|-----------|
| MOTION CONTROL SYSTEMS, INC. Dublin, Virginia 24084 | | | |
| FRAMELESS MOTOR PHYSICAL SPECIFICATION B51-XXX-38 VARNISHED WINDINGS (15.312 ID) | | | |
| SIZE B | SCALE NONE | DWG NO. 2012024 | REV. D |
| CHKD. DATE: | DWG DATE: TD 9-17-91 | SHEET | 1 OF 1 |